

# Professional Certification Review Manual

## APPRENTICE DRAFTER

### ARCHITECTURAL

## Competency 2

### Equipment-Media-reproduction

#### ITEMS TO REVIEW for COMPETENCY 2

The following items are parts of the CADD system elements. You should know the terminology for these and other related elements.

A. CPU – This unit contains your hard drive, graphics card and your software. The software is the key element of the CADD system.

B. Monitor (Output)

C. Keyboard (Input)

D. Digitizing Pad (Input)

E. Large format printer (Output)

F. Files server

G. Laptop Computer  
(Input)(Output)(Storage)(File)

H. External CD Drive  
(Input/Output)(Storage)(File)

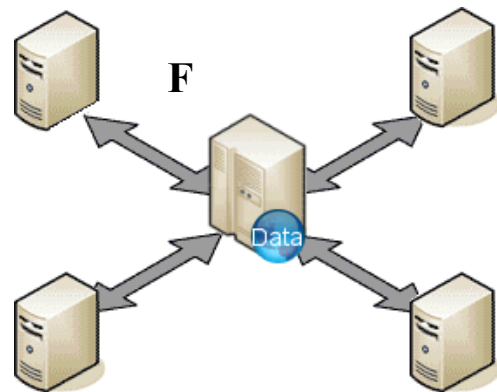
I. Scanner (Input)



A, B, C and D



E



F



G



H



I

**IDENTIFY THE TYPES OF SCALES**

1. Architectural
2. Engineering
3. Metric
4. Mechanical
5. Triangular
6. Flat
7. Bevel (3 types)
8. Machinists

**IDENTIFY THE TYPES OF ANGLES and HAND DRAFTING TOOLS**

Isosceles	Acute	Obtuse	Right
Equilateral	Right	Reflex	Full Rotation
Straight	Complementary	Supplementary	

**IDENTIFY THE TYPES OF HAND DRAFTING TOOLS**

Protractor	30-60-90 Triangle	45 Triangle	Templates
French Curve	Scale	Pen	Pencil
Dividers	Compass	Ruler	Flexible Curve

**IDENTIFY PROPER ARCHITECTURAL PAPER SIZES**

**Architectural Drafting Sheets and Title Blocks**

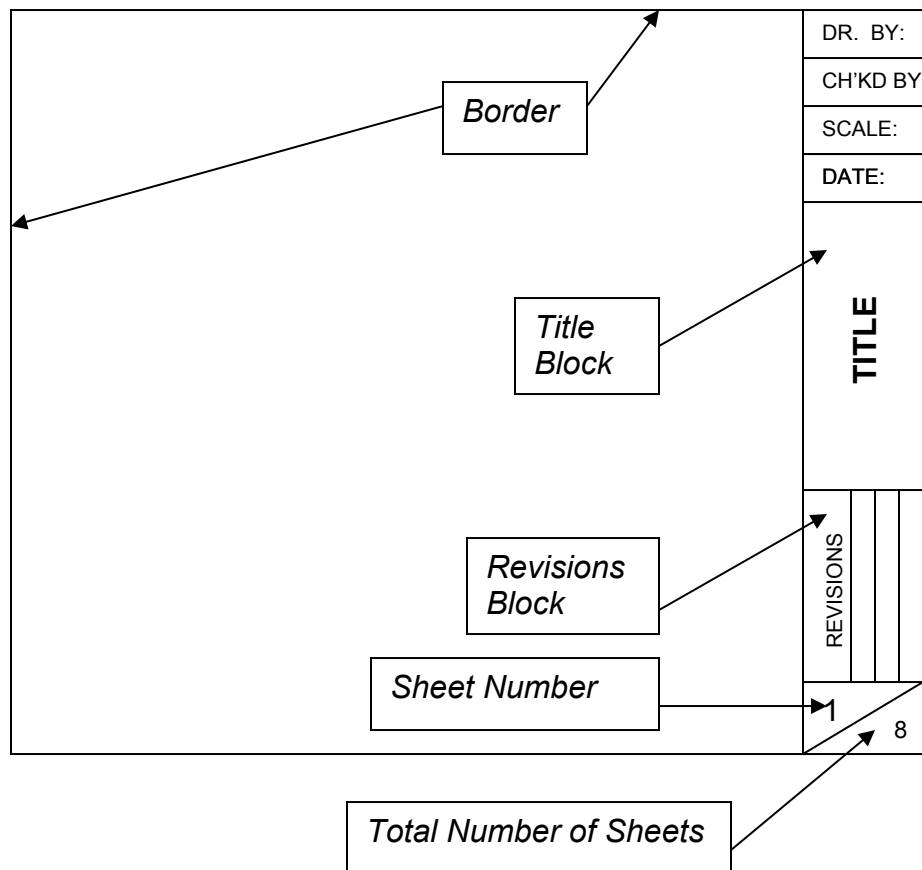
Sheet size is based on a 12"x9" sheet

Sheet Designation	Sheet Size
A	12"x9"
B	18"x12"
C	24"x18"
D	36"x24"
E	48"x36"

**IDENTIFY REPRODUCTION TYPES and PAPERS RELATED TO THEM**

1. Blueprints
2. Blue-lines
3. Blacklines
4. Plots
5. Graft Paper
6. Prints
7. Mylar, Vellum, Bond

Architectural title blocks are placed on the right side of the drawing sheet



(one example of an architectural titleblock)

**REVIEW QUESTIONS:**

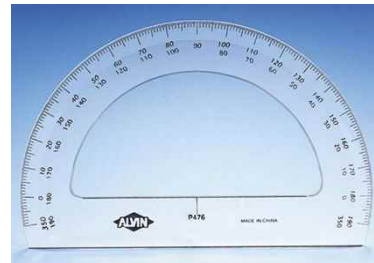
1. What does the acronym CADD stand for?
2. What is the difference between a plotter and printer in regards to drawing output?
3. A circle would be drawn with a protractor.
  - a. T

4. There are 12 scales on the standard architectural scale.

- a. T
- b. F

5. Identify the object shown.

- a. Half circle
- b. Degreed circular scale
- c. Half moon
- d. Protractor



6. A machinist's scale can be used for architectural scaling. (T) (F)

7. The object shown would be considered a drafting pencil. (T) (F)

- a. 

8. What type of scale is shown below?



- a.

9. Graph paper comes in only  $\frac{1}{4}$ " squares.

- a. T
- b. F

10. Blueprints are still the most used type of drawing hardcopy.

- a. T
- b. F